

# Tamed Wilderness

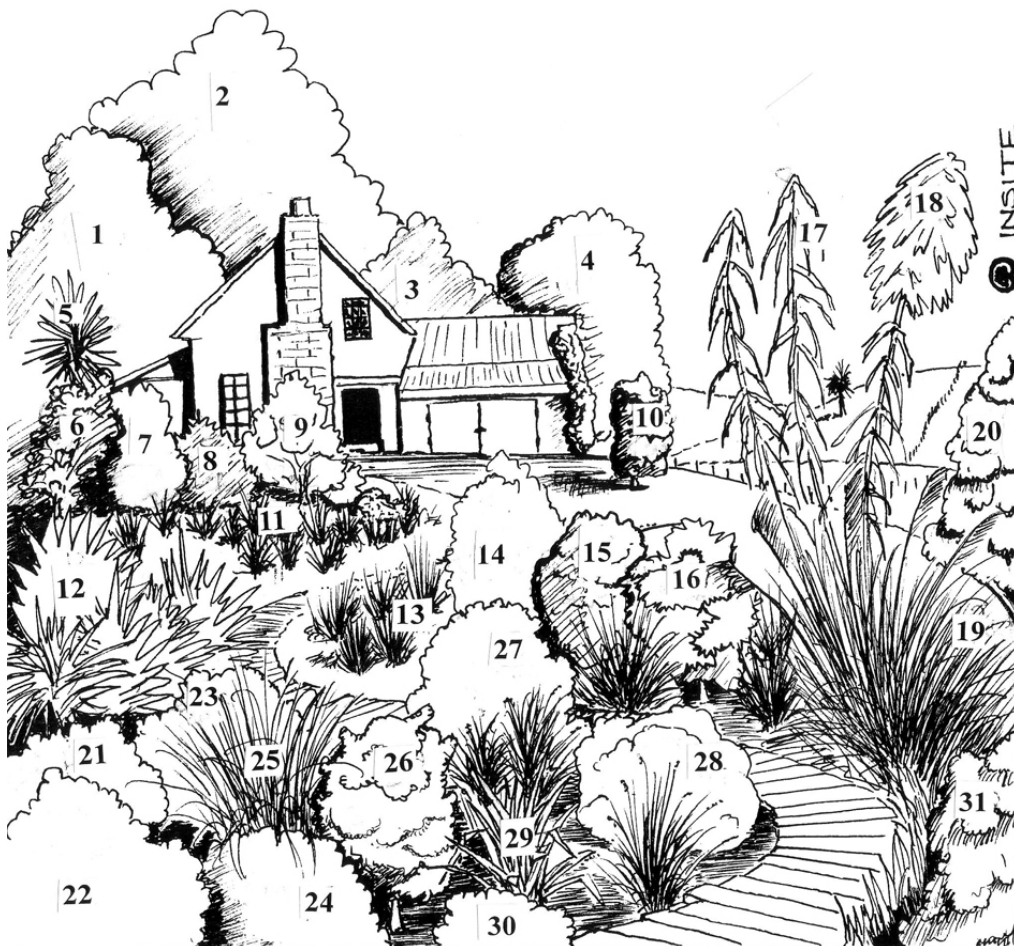


Re-creating a patch of New Zealand's wilderness in your backyard is entirely possible. It just takes a devoted effort to focus on the one theme and not be tempted to add in 'bits and pieces' of your cottage garden, potted colour or roses. Lovely as they are, the 'Tamed Wilderness' does not need accessories – it is quite stunning on its own.

Use nature as your guide. Look at how textures and forms are put together in the wild and scale it down to suit your site. Simplicity is the key. Use some groups, some individual specimens.

The 'Tamed Wilderness' concept has not used any hybrid or cultivar species but these may be added if preferred.

Mulching with stones, bark, leaves or a combination will reduce maintenance, increase moisture levels and set off the whole area with a natural floor. Larger rocks strategically placed can add another feature and blend into the 'natural' look. A boardwalk or pathway lined with small rocks and filled with stones/pebbles can become the 'tamed' portion of your wilderness area.



## Plant Suggestions for Wilderness gardens

	Botanical Name	Common Name
1	<i>Kunzea ericoides</i>	Kanuka
2	<i>Plagianthus betulinus</i>	Ribbonwood
3	<i>Leptospermum scoparium</i> or <i>Sophora</i>	Manuka or Kowhai
4	<i>Aristotelia serrata</i>	Wineberry
5	<i>Cordyline australis</i>	Cabbage Tree
6	<i>Lophomyrtus obcordata</i>	Rohutu
7	<i>Carmichaelia odorata</i> or <i>Clianthus</i>	Broom or Kakabeak
8	<i>Coprosma propinqua</i>	Mingimingi
9	<i>Lophomyrtus obcordata</i> or <i>Pseudowintera colerata</i>	Rohutu or Pepper Tree
10	<i>Toronia toru</i>	Toru
11	<i>Carex</i> spp or <i>Dianella</i>	
12	<i>Phormium</i>	Flax
13	<i>Carex buchananii</i> or <i>Corokia</i> or <i>Myrsine divaricata</i>	Sedge Grass or Korokio or Weeping matipo
14	<i>Meulenbeckia astonii</i>	
15	<i>Plagianthus divaricata</i>	Shore Ribbonwood
16	<i>Leptospermum</i> or <i>Coprosma</i> spp or <i>Pennantia corymbosa</i>	Manuka or Coprosma or Kaikomako
17	<i>Pseudopanax crassifolius</i>	Lancewood
18	<i>Cortaderia toetoe</i>	Toetoe
19	<i>Chionchloa flavicans</i>	Snow Tussock
20	<i>Myrsine australis</i>	Matipo / Mapou
21	<i>Hebe arborea</i> or <i>Hebe stricta</i>	Hebe
22	<i>Meuhlenbeckia astonii</i>	
23	<i>Corokia</i>	
24	<i>Hebe arborea</i> or <i>Hebe stricta</i>	Hebe
25	<i>Anemanthele lessoniana</i>	Wind Grass
26	<i>Coprosma</i>	
27	<i>Corokia</i>	
28	<i>Hebe arborea</i>	
29	<i>Machaerina sinclairii</i>	Broad leaved Sedge
30	<i>Cassinia fulvida</i>	Golden Cottonwood
31	<i>Macropiper excelsa</i>	Kawakawa

**By no means limit yourself to the plants suggested. Substitute as appropriate for your site and situation.**